



# 14<sup>th</sup> SOUTH EAST ASIA SURVEY CONGRESS

15<sup>th</sup>-17<sup>th</sup> August 2017

LAND VALUATION, ADMINISTRATION AND MANAGEMENT  
– BRUNEI PERSPECTIVE

Eddy Haji Mohamad  
Land Valuation Officer  
Land Department

# CONTENT

- Introduction
- Land Administration
- Land Management
- Valuation Section
- Valuation and Survey
- Desktop Inspection
- Challenges
- Expectations
- Conclusion

# Introduction

## Vision

‘optimal land utilisation’

## Mission

‘to provide registration, administration and management of land to secure socio-economic of the country’

## Roles of Land Department

- To uphold and keep up to date the Land Register
- To prepare working papers for the authorities on Land Affairs
- To Collect Land Annual Ground Rent and Revenues
- To Perform Land Valuation on behalf of the Brunei Darussalam Government

# Land Administration

“is the way in which the rules of land tenure are applied and made operational”

Wikipedia

“the processes of determining, recording and disseminating information about the ownership, value and use of land when implementing land management policies”

Prof. Hans Sevatdal, 2002

# Land Administration

Land Department

# Land Management

“is the process of managing the use and development of land resources”

Wikipedia

“the activities associated with the management of land as a resources from both an environmental and economic perspective towards sustainable development”

Prof. Hans Sevataldal, 2002

# Land Management

- Government agency may time to time require a plot of land
- Land may be needed for various purposes
  - Housing, School, Mosque





# Land Management

- Land alienation may and may not involve private land
- The acquired land will be compensated accordingly
  - Land size acquire
  - Any developments on the land

# Valuation Section

## Main Function

To provide statutory and non-statutory assessment on behalf of the government

# Functions of the Valuation Section

## Statutory

- Stamp duty for land transfer
- Compensation for land acquisition
- Estate Duty for transmission of land

## Non Statutory

- Mortgages
- Exchange of Land

# Valuation and Survey

- Site inspection is very crucial
- Know the right land to inspect
- Development within and outside the boundary
  - Values varies with location

# Desktop Inspection

## RSO Sheet

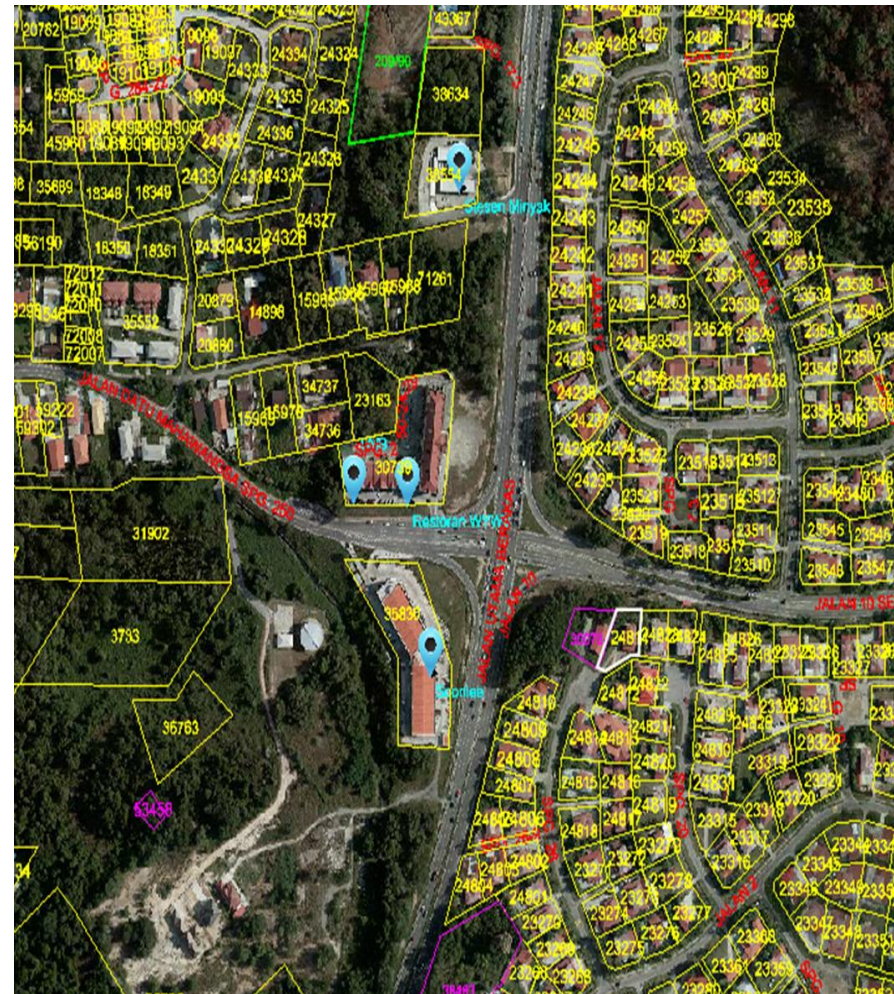
- Traditional
  - Developments not shown
- Not user friendly
- Faded
- Worn out
- Not updated



# Desktop Inspection

## Geoportal

- Modern
  - Development is shown
- User friendly
- Updated
- View from anywhere
- Flexible



# Challenges

- Data is not stored digitally
- Integration of land values and land mapping
- Inaccessible land for inspection



# Expectations

- Real data / images for geoportal
- 3D images
- Inspection using drones
- Integration of map with land value



# Conclusion

- Acknowledge the weakness
- Realise the opportunity and making use of what we have
- Computerize report
- LARIS

THANK YOU